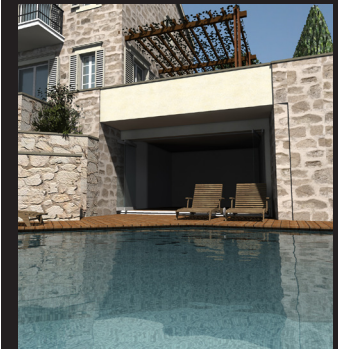
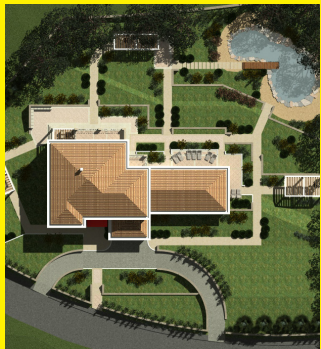


www.arhisgroup.com
arhisgroup@gmail.com

Arhis
Group

Arhis Group d.o.o.
Trg Sunca 2, Budva
Montenegro



Arhis Group - the company for urban design and architecture was founded in 2004 in Budva, Montenegro.

Our architecture aims to combine modern tendencies and rich Mediterranean heritage with the one final goal: benefit and satisfaction of our clients.

The main fields of our work are project production and project management. We provide the complete service, from consulting and planning to development supervision.

The reference list is long and includes urban plans and studies, as well as projects of hotels, office and public buildings, residential complexes, apartment buildings, houses and villas.

Arhis Group provides complete technical documentation needed for obtaining the building permit: from the preliminary design to the final main project, including all phases: architecture, construction, water and waste water installations, electrical installations, heating and cooling systems, landscape design, interior design.

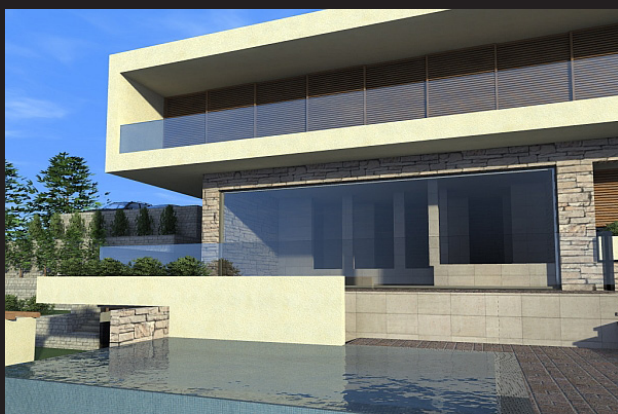
In 2008 Arhis Group won the international Cemex award in Montenegro, in the residential buildings category.

Arhis Group has an excellent team of engineers and designers able to respond to your requests.

Our design team:

Jevgenije Pavlovic, architect
managing director and founder

Branislava Milic Pavlovic, architect
Sasa Ilic, architect
Tomoslav Jovic, architect
Ada Asanovic, interior designer



Houses And Villas



Residential architecture takes large part of all our projects. To design a villa or family house appears to be the most challenging of all, not only because of the particular client demands, but also because the final goal is to create the home.

Montenegro and its coastal area praise with picturesque and idyllic landscape. But if we aim to keep it that way and to preserve the one thing that attracts everyone here, we have to incorporate buildings into landscape. No matter how hard and demanding, we always try to make the design fit the particular site conditions - something like tailor made suit.

Our reference list includes modern houses, traditional villas designs and reconstructions of old residences. In each case we insist on traditional materials, elements and proportions. We also tend to preserve as much of the existing landscape as possible.





Houses And Villas



Since 2004 Arhis Group produced designs for more than two hundred houses and villas.

A large number of them is situated in Budva and its surrounding villages: Pržno, St Stefan, Kuljace, Blizikuće, Rezevići, Krstac, Perazica Do, Krimovica, Ponte Veslo, Grbalj. We also designed houses in Ulcinj, Bar, Kotor, Kostanjica, Prčanj, Orahovac, Risan, Tivat, Herceg Novi, Kumbor, Igalo, Cetinje, Podgorica, Bijelo Polje.

In 2008 our design for the villa in Ivanovici was elected as the winning in the residential housing category in Montenegro.



Apartment buildings

Arhis Group designed a large number of apartment buildings, mostly in Budva, Kotor and Herceg Novi Municipality.

Since the available land surface suitable for development and settlement expansion is very restricted category in Montenegro, the size of buildings vary depending on location.

On the edges of the towns developments mostly include several smaller buildings forming an apartment complex. Such buildings usually have up to 1000 square meters of gross building surface each.

In the cities we have designed apartment buildings of 2000 to 20000 square meters.

In each case we tend to make interesting and flexible solution to the location conditions, client and market demands and municipality requirements.





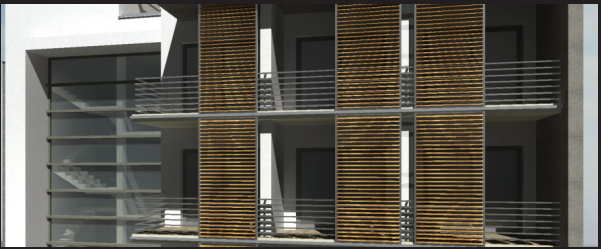
Apartment buildings



When designing apartment buildings we pay most attention to the functional aspect of each apartment unit. Also we give the importance to the efficient system of common spaces such as corridors and communication cores, in order to allow good access without losing the space that could be valorized as living area. This approach and the final looks of our designs showed good market results during the years.



Hotels And Commercial Buildings



This Group reference list includes a large number of different commercial buildings: from small family hotels, restaurants, office buildings, wellness centers, industrial buildings, marina, malls, hospitals, to hotel reconstructions, tourist multi functional centers and new hotels. The design approach differs depending on the project task and estimated investment value.





Hotels And Commercial Buildings



Among Arhis Group designs for commercial buildings hotels have the greatest part. We have designed numerous small and middle sized family hotels in Budva, Sutomore, Herceg Novi and Kotor, due to the fact that this is the most represented type of investment in every community which is oriented toward tourism.

We were involved in the design for reconstruction of hotels in Petrovac, Milocer and Budva.

Hospital in Cetinje, wellness center in Podgorica, shopping mall in Budva, resort in Herceg Novi, office building and hotel in Budva, industrial and warehouses - all represent the diversity of our architectural practice.





Urban design



Arhis Group is successfully involved in different aspects of urban design and urban plans production.

During the years we have done several detailed urban plans and urban studies, among which detailed plan in Petrovac, location study in Cetinje, urban study for the village Kamenovo, urban study for Lovcen mountain.

Public urban design projects include the reconstruction of Old town entrance zone in Kotor, the project for the main promenade in Dobrota, the reconstruction of the Old town access and park in Budva.

Urban design projects and studies were also done for numerous residential complexes and resorts: in Budva, Rezevici, Blizikuće, Ulcinj, Verige, Kotor, Tivat, Kumbor, Kostanjica, Lovcen mountain.



